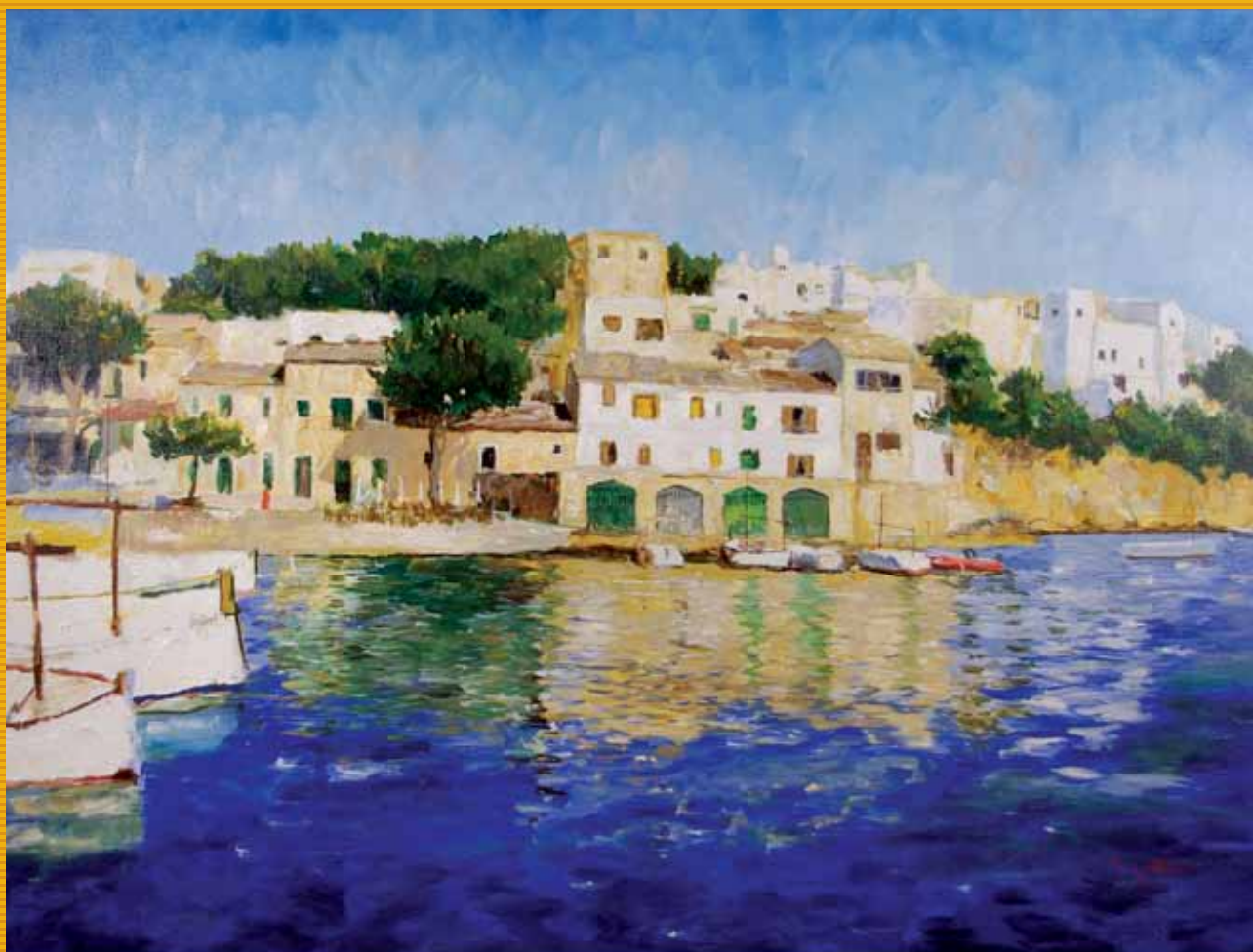


The Paintings of
MARCEL GATTEAUX

An English Post-Impressionist

MALLORCA

'Felanitx to Cabrera'



Porto Petro 1
Oil on canvas 80x110 cm


thomas fine art
www.thomasfineart.net


YACHT CLUB CALA D'OR

M. Gatteaux.

In the spring of 2009 Marcel Gatteaux travelled to South East Mallorca and was entranced by the beauty of its countryside and coastline. The dramatic terrain and vibrant colours intrigued and captivated Gatteaux and he returned each season to capture the changing light and colour of the landscape.

This outstanding collection of post-impressionist pictures are inspired by Gatteaux's journeys by land and sea, from the wildflower meadows of Felanitx and Santanyi, the colourful marinas of Cala D'or and Porto Petro, the beauty of Mondrago Natural Park, to the breathtaking views of Cabrera.

www.thomasfineart.net.



'The Green Boathouse 1'

Cala Mondrago
Oil on canvas 35x45 cm



'Wild Flowers & Finca'

S'Alqueria Blanca ~ Mondrago
Oil on canvas 65x100 cm



'Finca & Wild Flowers'

Es Pujol
Oil on canvas 50x75 cm



'Golden Wheat'

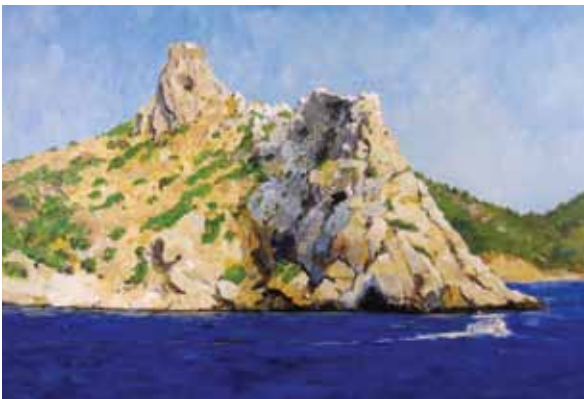
S'Alqueria Blanca ~ Porto Petro
Oil on canvas 25x35 cm



'A view through the pine Trees'

Mondrago 1

Oil on canvas 120x100 cm



'The harbour castle'

Cabrera 1

Oil on canvas 75x90 cm



'Finca, Es Rafal'

Son Macia

Oil on canvas 55x70 cm



'Porto Petro 2'

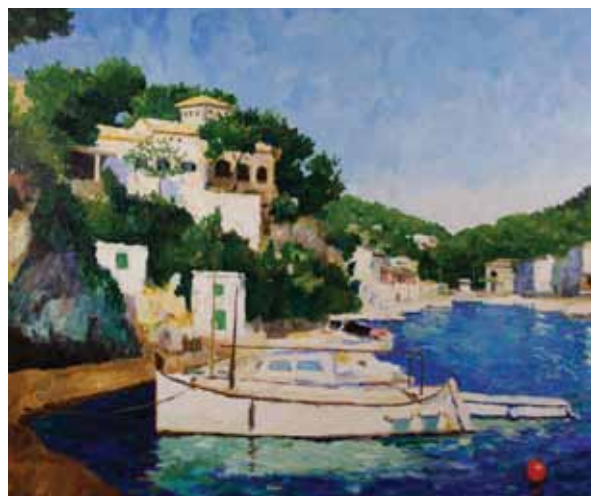
Oil on canvas 60x75 cm



'The Harbour Entrance'

Cala Figuera 2

Oil on canvas 60x70 cm



'Llauts'

Cala Figuera 1

Oil on canvas 75x90 cm



'Morning Sun'

Cala Figuera 5

Oil on canvas 60x90 cm



'Llauts, West Quay'

Cala Figuera 3

Oil on canvas 75x90 cm



'S'Amarador'

Mondrago 2

Oil on canvas 90x70 cm



'Yachty Botty'

Cala Mondrago

Oil on canvas 35x45 cm



'Boathouse & Llauts'

Cala Figuera 4

Oil on canvas 40x50 cm



'Sail Boats off Cabrera'

Oil on canvas 50x75 cm



'The Green Boathouse 2'

Cala Mondrago
Oil on canvas 25x30 cm



'Wild Flowers & Windmill'

S'Alqueria Blanca~Felanix
Oil on canvas 50x60 cm



'Wildflowers'

S'Alqueria Blanca~Mondrago
Oil on canvas 60x85 cm



'Almond Trees & Wildflowers'

Porto Petro~Mondrago
Oil on canvas 18x20 cm



'Boathouses 2'

Cala D'Or
Oil on canvas 50x60 cm



'Wild Chrysanthemums & Almond 2'

Santanyi~Felanix
Oil on canvas 102x120 cm



'Boats off Porto Petro'

Porto Petro 3
Oil on canvas 40x100 cm



'Afternoon Sun'

Cala Figuera 6
Oil on canvas 70x90 cm



'Boathouses 3'

Cala D'Or
Oil on canvas 60x70 cm



'Boathouses 4'

Cala D'Or
Oil on canvas 42x62 cm



'View towards Cala 'S'Amarador'

Mondrago 3
Oil on canvas 65x92 cm



'Summer Evening'

Cala Mondrago
Oil on canvas 22x45 cm



'Old Finca'

S'Alqueria Blanca ~ Porto Petro
Oil on canvas 50x75 cm



'Boathouses 1'

Cala D'Or
Oil on canvas 60x85 cm



'Springtime'

S'Alqueria Blanca
Oil on canvas 50x60 cm



'Wild Chrysanthemums & Almond 1'

Santanyi ~ Felanitx.
Oil on canvas 90x90 cm

M. Gatteaux.

BIOGRAPHY

Marcel Gatteaux was born in London in 1962 and attended the Camberwell Art School. He started exhibiting his work in 1987, both in mixed and solo shows, and his pictures are held in public and private collections around the world.

Gatteaux's love of the hot vibrant landscape of the Mediterranean region follows a tradition started by the early impressionists. It is his exceptional ability to recreate the colour and heat of Southern Europe, together with a clear understanding of balance and composition that has led to such a wide and enthusiastic following.

He has travelled extensively in Europe seeking new subjects and to capture the heat and light associated with this part of the world. He is known particularly for his images of the South of France, the Greek Islands, Venice, Spain and Morocco which, from very early on in his painting career, have been highly acclaimed.

thomas fine art
www.thomasfineart.net

Telephone: +44 (0)1428 648440 Mobile: +44 (0)7799 114771 Email: info@thomasfineart.net
At Great Grooms of Hungerford, Riverside House, Hungerford, Berkshire, RG17 0EP, UK